



# Annual activity report

# 2024

## OUR ADDRESS:

Via Temistocle Calisti, 16 00166  
Roma, Italy  
Tax code: 97286010588  
Website: [www.magicamor.org](http://www.magicamor.org)  
Email: [info@magicamor.org](mailto:info@magicamor.org)

APRIL 2025

## EDITORIAL

At the close of 2024, it is our pleasure to present the annual edition of Magic Amor ETS—a year of transformation and renewed hope. This year marked a turning point in the history of our humanitarian organization, which has consolidated its strengths while embracing new perspectives and reinforcing its commitment to children's rights and community development in the Democratic Republic of the Congo. Thanks to strategic infrastructure projects and the continued delivery of essential services in the Kimbuta region, we have provided tangible support to vulnerable populations, restoring hope and dignity to those who needed it most.

At the same time, our initiatives in Italy have forged strong bonds between our partners and beneficiaries, thereby bridging hearts and continents. These actions, driven by an unwavering dedication to defending children's rights, have helped raise awareness of our mission and mobilize the necessary resources to implement our projects. The commitment and generosity of our volunteers, donors, and partners have been the driving force behind these remarkable achievements, enhancing both our credibility and our humanitarian impact.

Facing persistent challenges, we have demonstrated resilience and innovation by adapting our intervention methods to meet local realities and the urgent needs of communities. We have developed training, support, and awareness programs that sustainably transform the daily lives of vulnerable populations while fostering enriching cultural exchanges between our field teams and international collaborators.

In sometimes difficult circumstances, the words of Dr. Nzumbu lo Ambetima resonate with strength and clarity: **« I founded Magic Amor ETS with the conviction that each of us has the moral duty to contribute to development. In my country, in the Democratic Republic of the Congo, children were forced to work in the fields of teachers and school administrators, and were beaten if they refused to work. Something had to be done. Someone had to stand up for the children. »**

These words continually remind us of the importance of our mission and inspire us to persevere in our struggle for a better future. Let us conclude this editorial by reaffirming our determination to build a future of solidarity and hope. Let us transform challenges into opportunities and drive forward our mission of justice for all. Let us remain united for humanity.



**Maurice Pascal Ambetima**

*Secretary General*  
Magic Amor ETS

# SUMMARY



Editorial	2
Summary	3
Our Values	4
Our Missions	5
Our Actions in 2024	6
Our Key Figures	8
Annex	9

## OUR VALUES



### Humanity

Our actions aim to provide disadvantaged populations with the means to overcome poverty without seeking personal gain. Our commitment is to restore dignity and hope to the most vulnerable by acting with compassion and respect.



### Integrity

Driven by unwavering integrity, we demonstrate transparency and accountability in each of our initiatives, firmly opposing behaviors that contravene our ethical standards.



### Solidarity

As an essential value added to our mission, solidarity compels us to join forces and share resources and expertise to build resilient and self-sufficient communities.



## OUR MISSIONS

### 01

To promote human, cultural, economic, socio-sanitary, and gender development, as well as the protection of flora and fauna in underprivileged African regions, particularly in the Democratic Republic of the Congo.

### 02

To revive the spirit of volunteerism in service of the populations in this part of the world by teaching them various trades on-site.

### 03

To support and establish integration projects for African populations through learning the Italian language, offering professional qualification courses aimed at entering the workforce, and ensuring health protection.

### 04

To organize public events in Italy and abroad to promote African cultures, and especially those of the Democratic Republic of the Congo.



## OUR ACTIONS IN 2024

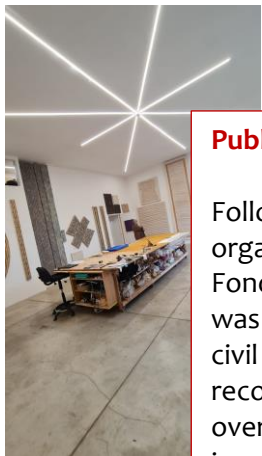
### Bridge in Kimbuta

One of the most transformative achievements was the successful completion of “Un Ponte per Kimbuta” (A Bridge for Kimbuta), an infrastructure project finalized in February 2024 and made possible by the generous funding of Fondazione Sidival Fila. This bridge now connects the once-isolated village of Kimbuta to the surrounding areas, providing permanent access to the local health center, schools, and food supply routes—a critical improvement during the rainy season when mobility was severely compromised. It stands as an essential asset for the region’s resilience and development, as well as a symbolic gesture of connection and dignity for the entire community.



### Public Event in Roma

Following its completion, Magic Amor ETS organized a public event in collaboration with Fondazione Sidival Fila, during which the project was officially presented to institutional actors and civil society. This moment of transparency and recognition allowed us to share the challenges overcome, the human stories, and the profound impact the bridge has already started to generate. Testimonials from educators, health professionals, and local residents underscored the bridge’s role not only in improving physical access but also in restoring a sense of belonging and progress.



## OUR ACTIONS IN 2024



### Multi-purpose Center

Simultaneously, Magic Amor ETS continued its dedicated work at the multifunctional center in Kimbuta, which includes an elementary and secondary school, a small outpatient clinic, and the Maison des enfants San Marcello orphanage. This center remains the focal point of our mission in the region, providing integrated support to vulnerable children and families. In 2024, hundreds of students received daily instruction while the orphanage offered shelter, meals, and psychosocial support. The clinic provided basic health services, maternal care, and essential medications to the community.



### Solidarity Walks

Solidarity walks organized in various cities further mobilized support. These community events, designed to combine physical wellbeing with collective engagement, featured multimedia exhibitions, project testimonials, and educational booths, creating an experience that was as instructive as it was moving. These walks played a vital role in fundraising and expanding our active support base.

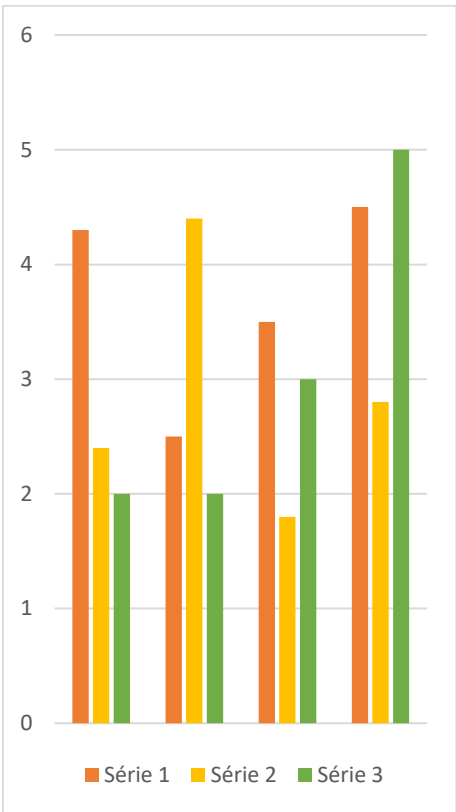
### Gospel Concert

Complementing our field operations, Magic Amor ETS mobilized its supporters in Italy through significant events such as the Christmas gospel concerts held in Rome and Milan. These gatherings—blending music, storytelling, and solidarity—attracted a wide audience, generating funds and increased visibility for our mission. They provided a warm and moving platform to amplify the voices of the children of Kimbuta and invited the Italian public to embark on a shared journey of hope and action.

# OUR KEY FIGURES

Operational expenditures reflect this growth and continuity. In 2024, a total of €58,277 was allocated to activities of public interest, including €32,615 for raw materials and consumables and €2,340 for services. An additional sum of €23,322 was dedicated to other essential operating costs. It should be noted that no expenditures were incurred for personnel or the rental of third-party assets, in line with our community-based and volunteer-driven model. The organization continues to optimize its impact through the prudent allocation of every resource.

Thanks to these efforts, ad hoc fundraising initiatives generated €8,729.48, while associated expenses were limited to €3,100, resulting in a significant profit margin. Moreover, the organization benefited from in-kind support, with non-cash expenditures estimated at €38,400, once again confirming the importance of volunteer contributions and donated goods in sustaining our daily operations.



From a financial perspective, Magic Amor ETS closed 2024 with an overall surplus of €23,217.48—a significant outcome that demonstrates both rigorous financial management and strong donor commitment. Total operating expenses amounted to €61,898, and the year-end bank and cash balance reached €34,942.48, compared to €11,725 in the previous year. These figures confirm not only the sustainability of the organization, but also its growing capacity to plan and invest in the long term.



As we bring this chapter to a close, we extend our deepest gratitude to every donor, volunteer, partner, and friend who has supported us throughout the year. The Kimbuta bridge, classrooms filled with laughter, and the songs resonating in Italian churches—each of these elements is a thread in the tapestry of compassion and global responsibility that we weave together. At Magic Amor ETS, we firmly believe that even the most remote village holds immense potential. Thanks to your continued support, we will keep building pathways—both tangible and symbolic—toward justice, education, and love.

## **Annex**

## THIRD SECTOR ENTITY "Magic Amor Ets"

## CASH FLOW STATEMENT ( by cash inflow/outflow method) in €

	2024	2023		2024	2023
<b>EXPENSES</b>			<b>REVENUES</b>		
<b><u>A) Expenses related to general interest activities</u></b>			<b><u>B) Revenues from general interest activities</u></b>		
1) Raw materials, consumables, goods	32 615	30 890	1) Membership fees and founders' contributions	3 290	3 490
2) Services	2 340	1 832	2) Contributions from members for mutual activities	0	0
3) Use of third-party assets	0	0	3) Services and sales to members founders	0	0
4) Personnel	0	0	4) Donations	37 998,22	12 565
5) Other operating expenses	23 322	19 600	5) "5 per thousand" revenue	8 729,48	8 990
			6) Private contributions	26 825	19 425
			7) Services and sales to third parties	0	0
			8) Contributions from public entities	0	0
			9) Revenue from contracts with public entities	0	0
			10) other revenue	0	0
<b>Total</b>	<b>58 277</b>	<b>52 322</b>	<b>Total</b>	<b>76 842,70</b>	<b>44 470</b>
			<b>Net Result from activities of general interest (+/-)</b>	<b>16 200,48</b>	<b>-7 852</b>
<b><u>B) Expenses from ancillary activities</u></b>			<b><u>B) Revenue from ancillary activities</u></b>		
1) Raw materials, consumables, goods	0	0	1) Membership fees and founders' contributions	0	0
2) services	0	0	2) Private individual contributions	0	0
3) Use of third-party assets	0	0	3) Services and sales to third parties	0	1 022
4) Personnel	0	0	4) Contributions from public entities	0	0
5) other operating costs	0	0	5) Revenue from contracts with public entities	0	0
			6) Other revenues	0	0
<b>Total</b>	<b>0</b>	<b>0</b>	<b>Total</b>	<b>0</b>	<b>1 022</b>
			<b>Net Result from ancillary activities (+/-)</b>	<b>0</b>	<b>1 022</b>
<b><u>C) Fundraising expenses</u></b>			<b><u>C) Fundraising revenue</u></b>		

1) Regular fundraising expenses	0	0	1) Regular fundraising	0	0
2) Occasional fundraising expenses	3 100	1 147	2) Occasional fundraising	10 638	7 244
3) Other fundraising expenses	0	0	3) other fundrasing revenue	0	0
<b>Total</b>	<b>3 100</b>	<b>1 147</b>	<b>Total</b>	<b>10 638</b>	<b>7 244</b>
			<b>Net Result from fundraising activities(+/-)</b>	<b>7 538</b>	<b>6 097</b>
<b><u>D) Financial and patrimonial activity expenses</u></b>			<b><u>D) Financial and patrimonial activity revenue</u></b>		
1) Bank accounts	585,78	313	1) Bank accounts	0	0
2) Financial investments	0	0	2) Other financial investments	0	0
3) Real estate assets	0	0	3) Real estate	0	0
4) Other patrimonial assets	0	0	4) Other patrimonial assetss	0	0
5) Other expenses	0	0	5) Other revenue	0	0
<b>Total</b>	<b>585,78</b>	<b>313</b>	<b>Total</b>	<b>0</b>	<b>0</b>
			<b>Net Result from financial and patrimonial activities (+/-)</b>	<b>-521</b>	<b>-313</b>
<b><u>E) Expenses for general support activities</u></b>			<b><u>E) Revenues for general support activities</u></b>		
1) Raw materials, consumables, goods	0	0	1) Revenue from staff secondment	0	0
2) Services	0	0	2) Other general support revenue	0	0
3) Use of third-party assets	0	0			
4) Personnel	0	0			
5) Other expenses	0	0			
<b>Total</b>	<b>0</b>	<b>0</b>	<b>Total</b>	<b>0</b>	<b>0</b>
<b>Total operating expenses</b>	<b>61 962,78</b>	<b>53 782</b>	<b>Total operating revenues</b>	<b>87 480,70</b>	<b>52 736</b>
			<b>Net Result before taxes (+/-)</b>	<b>25 517,92</b>	<b>-1 046</b>
			<b>Taxes</b>	<b>0</b>	<b>0</b>
			<b>d) Income from financial and asset management activities</b>	<b>25 517,92</b>	<b>-1 046</b>
<b>capital outflows or investments to third parties</b>			<b>Capital inflows or disinvestments from third parties</b>		
1) Investments in fixed assets for general interest activities	0	0	1) Divestments in fixed assets for general interest activities	0	0
2) Investments in fixed assets for diverse activities	0	0	2) Divestments in fixed assets for diverse activities	0	0
3) Investments in financial and patrimonial activities	0	0	3) Divestments in financial and patrimonial activities	0	0



4) Loan repayments ( capital portion)	0	0	4) Loans proceedes	0	0
<b>Total</b>	<b>0</b>	<b>0</b>	<b>Total</b>	<b>0</b>	<b>0</b>
			<b>Surplus/ Deficit before investment, divestment and financing flows before taxes ( +/-)</b>	<b>0</b>	<b>0</b>
			<b>Taxes</b>	<b>0</b>	<b>0</b>
			<b>Surplus/ Deficit from investment, divestment and financing flows (+/-)</b>	<b>0</b>	<b>0</b>
<b>Surplus/Deficit before investments, divestmentsand financing</b>			<b>25 517,92</b>	<b>-1 046</b>	
<b>Surplus/Deficit from entries and exits related to investements, divestments and financing</b>			<b>0</b>	<b>0</b>	
<b>Overall surplus/Deficit of the financial</b>			<b>25 517,92</b>	<b>-1 046</b>	
<b>Cash on hand</b>			<b>0</b>	<b>0</b>	
<b>Bank accounts</b>			<b>37 242, 92</b>	<b>11 725</b>	
<b>Total cash</b>			<b>37 242, 92</b>	<b>11 725</b>	
<b>NON- CASH EXPENSES AND REVENUE</b>					
		<b>2024</b>	<b>2023</b>	<b>2024</b>	<b>2023</b>
<b>Non-cash expenses</b>			<b>Non-cash Revenue</b>		
1) For activities of general interest	38 400	38 400	1) For activities of general ineterest	38 400	38 400
2) For other activities	0	0	2) For other activities	0	0
<b>Total</b>	<b>38 400</b>	<b>38 400</b>	<b>Total</b>	<b>38 400</b>	<b>38 400</b>
<b>Reconciliation check</b>					
Cash at the end of the previous year	11 725				
Surplus/ /Deficit of the current year	25 517,92				
Cash at year-end	37 242, 92				
	Correct				